



## Boxer ranked top in NZ

Bulls raised champion NZ boxer Emile Richardson, won a boxing silver medal in Poland when he was selected to represent NZ in Warsaw, Poland and Castellon, Spain at international amateur boxing tournaments in April and May.

Locally raised in Bulls and currently based in Taupo, 21 year old Emile has risen to become the number one ranking NZ middleweight boxer and number 24 in world rankings. It qualifies him for a chance to represent NZ at the Olympics.

Emile began his boxing as a 14-year-old, at Schuster's Gym in Feilding. After moving to Taupo, he carried on training and had his first fight at the age of 15. In the last two years, he made a move to Rotorua Central North Island Boxing where he trains twice a week. His boxing has taken off since the move.

Since Emile qualified in Auckland to represent NZ earlier this year, he competed and won the Super 8 title in the Australasian tournament with matches in Auckland and Australia where he beat top State boxers.

His NZ coach, Billy Meehan is based in Palmerston North, so Emile also travels to this region to train with him, as well as participating in high performance training camps in Auckland.

In April, a squad of six boxers - 4 females and 2 males - which included Commonwealth Games gold medallist David Nyika, travelled to Europe where the team competed in Poland, then moved to Italy for a training camp and finally Spain, for another tournament.

Emile was thrilled to be awarded the silver medal at a very successful tournament in Poland, defeating the number one Polish boxer and making the final against Sweden, where he fought well but received a head injury.

At the training camp in Italy, Emile had to take it easy, with swelling to his head and therefore, only did light training and no sparring. In Spain, the draw put him up against the top Spanish boxer. There were nine competitors in his weight. Emile boxed very well and had



Former Bulls man Emile Richardson is ranked number one NZ middleweight boxer.

opportunities to win. The pair boxed toe to toe but the Spaniard got the win and later went on to win gold.

Emile's mum Bronwyn Meads (from Bulls) and her brother Chris, travelled over to support Emile

and found it to be an excellent environment for NZ boxers.

Continued page 2 ...

### FARMERS

WE OFFER...

Direct Drilling and autumn cultivation  
Hay straw and balage sales and processing.

**BRUCE GORDON CONTRACTING LTD**

CALL US ON 0800 CROP IT (276748) or 063276094

### GK SKOU TRANSPORT

**LIVESTOCK AND GENERAL TRANSPORT**

37 Kensington Road  
MARTON

Ph 06 327 6424  
027 442 7463

Email:  
graeme.skou@xtra.co.nz

Big enough to compete - small enough to care



### FAMILY HISTORY POSTERS



**marton print**  
RIGHT-ON-TIME

28 HIGH STREET MARTON  
P. 06 327 7411

USING OUR TEMPLATE OR A CUSTOMISED VERSION TURN YOUR ANCESTRY INTO ARTWORK GREAT FAMILY PRESENTS

## Pick your winter treat

### Hilton Tub Chair



**\$1195**

### Harper Coffee Table

1200mm L x 470mm H x 700mm D



**\$799**

### Post n' Rail TV Cabinet

1200mm L x 590mm H x 420mm D



**\$899**

Huge Selection of Giftware

OPEN Saturday 9am - 1pm

**Ward's FURNITURE LTD**

219 BROADWAY, MARTON

Free Delivery

PH 06 327 6045

Free Delivery



# Dave's Homekill

For all your butchering requirements

Operating in Rangitikei & Manawatu

28 Terrace St Marton - Ph 063275551



Got energy?



All dogs welcome.  
Saturdays at 9am  
Sir James Wilson Park  
www.tailsandtrails.nz  
tailsandtrailsdogclub@gmail.com



Contd from page 1 ...

## Boxer ranked top in NZ.

...Emile's goal is to represent NZ at the Olympics in 2020 and it's essential that he compete internationally to be at a high performing level. Each NZ boxer is given a high performance plan and plan for the rest of the year. NZ can't provide this level of competition for boxers, as there are not enough fighters in the country. For example, the Spaniard Emile fought had 200 fights to Emile's 44, so there is a huge gap. The fighters have access to so many oponents and tournaments in countries that NZ doesn't enjoy.

Bronwyn Meads says, "All of this travel to high level competition comes at a high cost and has to be funded individually. Most elite athletes aren't able to work, as they are in heavy training schedules and travel. Local Dr Dave Baldwin believes in Emile and has partnered with him for two years now with sponsorship. Recently, local man John Keay, Meads Bros and Richardson families have also helped out. His grandma, Jenny Meads also helps with financial support and a good meal. Travelling to Europe, cost approx \$5000 and his schedule this year, could take him next to competitions in Thailand, Oceania champs, Russia and more.

"Emile works extremely hard. He is so resilient and I have seen him get up when others wouldn't. He is super tough but also has a softness to him.

"He has recently given up his job, where he was mentoring troubled youth; something he was very good at.

"We would be so grateful if people in the community got behind him to help make his dream of boxing for NZ, not only at the Olympics but at the world champs in Russia, among other tournaments."

To follow or wish Emile luck on Instagram look for: emile the real deal

# Youth award dual winners



**Tia Wright (second right) and Lydia Whyte (right) were dual winners of the Change Maker award at the recent Rangitikei Youth Awards. The award was presented by sponsors Nigel Belsham (left) and Glenn Jongen from BJW Motors Ltd.**

**Tia Wright** has been an outstanding role model for success in the arts over her entire school career and her work as a musician has really been an excellent motivation for other students to get involved in the performing arts. Tia led the Rangitikei College kapa haka group in 2018, winning the school award for commitment and dedication to tikanga Maori. Tia competed in the national rock quests competition, achieving the Whanganui regional best song award in 2015; Regional Lyric writing award in 2016; Regional Pacifica Beats award in 2017 and in 2018 placed 1st in the Solo/Dual category at the Whanganui regionals.

**Lydia Whyte** is highly supportive of others, which has gained her leadership roles including head of Humanities and head of the UNICEF club where she organised all of the fundraising projects. Lydia instigated the UNICEF Club at Nga Tawa in 2017 after a personal response to the plight of Syrian refugees. She inspired the school community through education to make a significant response and send funds to support women and children in particular. Lydia and her team catered for all the house events, providing afternoon tea for families and raising over \$1000 at each event.

# WINTER PAINT SALE

# 20% OFF

SELECTED COLOURPLUS ULTRACARE PAINT\*



**COLOURplus** we've got your style

**Broadway Colourplus**

Wellington Rd Marton

Ph 06 327 7758

\*Offer applies to Colourplus 4 & 10L size variants. Colourplus UltraCare white base only. Tinting charges extra. Offer ends 9th June 2019 or while stocks last.

**STATIONERY  
ONE STOP  
& BOOKS**

**BRUCE RENNIE  
BOOK "VERVE"  
INSTORE NOW**

237 Broadway, Marton Phone 06 327 4054  
onestopstationeryandbooks@outlook.com

# Matariki Concert

13th June

5.30 – 6.30pm

Bulls Town Hall

*Gold Coin Donation Entry*

*A celebration with our Schools,  
Marae and Community*

**Plenty of young fabulous performers on show at annual Matariki Concert**

Bulls Town Hall will once again be the venue for the annual schools' Matariki Concert next Thursday, 13 June. The concert runs from from 5.30pm till 6:30pm.

The concert is supported by the Bulls Community Trust and is a way for Bulls area schools to give back to the community through performance celebrating the Maori New Year.

This year's concert will feature performances by the Bulls School kapa haka group, Clifton School kapa haka group and a representative from the local Bulls Parewahawaha Marae, will be involved.

The organisers are looking foward to having as many of the community as possible come and enjoy the performances which presents the fabulous young talent from the local kura.

Entry is by a gold coin donation.

Go along, celebrate this community event and your local schools.



# AT THE COUNCIL



Council Roundup May

Another development agreement came to the Council table last week. Ward Furniture is planning to earthquake-strengthen their building and asked for a waiver of consent fees and a three-year rates rebate. This led to considerable debate about whether the application complied with the policy, which gives assistance when a building is unoccupied while work is done. This was because Ward Furniture will continue to operate its business during the strengthening process.

There was also concern that the development policy might lead to a significant loss of rates for the district if many business owners decide to upgrade their buildings and that loss would have to be made up from other ratepayers. Eventually the agreement was accepted but with only one year of rates rebate instead of the three requested.

Recommendations from the recent Annual Plan consultation were discussed. The proposed \$50,000 contribution to the new St John Ambulance station in Taihape was approved, and the funding pool for community-led projects was increased from \$50,000 to \$100,000. Councillors voted against trialling support for a cat de-sexing campaign, but approved a trial to pay for euthanising feral cats caught in Council traps.

Work is continuing on plans for the new Marton civic centre building and Council hopes to start consulting with the community on the plans in late August.

## McKelvie Memos

MP for Rangitikei



National will support the Climate Change Response Act Amendment Bill through its first reading.

The Bill seeks to reduce New Zealand's emissions of all greenhouse gases, except biogenic methane, to net zero by 2050. It also seeks to reduce our gross emissions of biogenic methane within the range of 24 - 47 per cent below 2017 levels by 2050 - and it includes an interim requirement to reduce gross emissions of biogenic methane by 10 percent below 2017 levels by 2030.

We are totally supportive of efforts to reduce emissions and we agree with many elements of the Bill, including the establishment of a Climate Change Commission. This is essentially an independent Crown entity, which will be set up to provide expert advice on the transition to a low emissions and climate resilient NZ.

I have a problem however with the proposed methane target, and the level at which it has been set in the Bill. I believe it's vital we ensure our approach manages economic impacts, and is in line with a global response. In fact, targets shouldn't even be included in the Bill.

The proposed 24 - 47 percent reduction in methane is not reflective of scientific advice and is too much too fast. A range of scientific reports have suggested agriculture would contribute no further warming with a 10 - 22 percent reduction, which would be a more reasonable target.

This is exactly the sort of decision the newly formed Climate Change Commission has been set up to consider and provide advice on - yet the one thing the Commission should be advising on, is the one thing they haven't been asked to do. The Regulatory Impact Statement for the Bill raises some big concerns around the economic implications for New Zealanders too. In total, \$300 billion is forecast to be shaved off the NZ economy between now and 2050. Our economy will be nine percent smaller under this target compared with the existing 50 percent reduction target set by National.

What's more, this figure already banks on new technology such as a 'methane vaccine' to reduce emissions from cows. It also assumes electric vehicles make up 95 percent of our fleet, renewable electricity makes up 98 percent of all electricity supply and 20 percent of our dairy, sheep and beef land is converted to forestry.

So, if some of these assumptions don't come to fruition - or technologies take longer to develop than was first anticipated or people don't convert to electric cars as fast as the Government is hoping - then we're in big trouble. And for rural and provincial NZ in particular, the implications could be devastating. The \$300 billion forecast cost could quickly double or even quadruple. The effects on our rural towns and cities would be dreadful not to mention the social fabric of our communities. The effect on our balance of payments would be equally disastrous.

I acknowledge, we need to reduce emissions and support global efforts to avoid climate change, but we also need to be open and honest about the potential costs of doing so - so no, targets should not be included in this Bill.

## BITS n' PIECES



**Musician Christine White** will play on stage at Marton Players Theatre on Saturday June 8 at 7pm. She is a singer-songwriter/performer/composer with a degree in Sonic Arts composition from Victoria University in Wellington. Door sales - \$15 each.

## Forest company gives locally



**Eric Sun and Cynthia Lin** from Fortuna Forest Product, based in Auckland, attended the recent reopening of the newly designed Marton Skatepark.

The company made a generous donation to the skatepark project along with sponsoring the Rangitikei Youth Awards.

The pair spent the rest of the day being shown around Marton and district by Mayor Andy Watson and John and Angela Turkington from Turkington Forestry who introduced them to the community projects they could support. It was the first time either of them had visited Marton.

## HEALTH SCENE



### WDHB urges care with alcohol this school ball season

With school ball season around the corner, Whanganui District Health Board urges teens, their parents and the wider community to show responsibility with alcohol at, before and after parties. WDHB health promotion officer Chester Penaflo says, "Every year the ball season brings conversations around alcohol, young people and parties. I know that on the ground, conversations around school balls and alcohol are already happening. The good news is there are things we can do as parents to help reduce the impact of alcohol on our teenagers.

"We know that what we do as parents -- how we communicate our expectations and whether we supply alcohol, do influence our children's choices."

He says evidence shows drinking alcohol at a young age can cause immediate and irreparable harm to the developing adolescent brain.

"Drinking alcohol at this age may result in learning difficulties, memory problems, mental health issues and other problems later in life, such as alcohol abuse and dependency."

"If parents do decide to provide alcohol to under-18s, they need to ensure they have express consent from the other parents or legal guardians of the teenagers involved; that teenagers are actively supervised when drinking; that substantial food is offered; that low or no alcohol beverages are available; and that transportation is arranged."

Supplying alcohol to under-18s, without express consent is an offence that can lead to a fine of up to \$2000.

Mr Penaflo strongly advises that children and young people under 18 years of age should not drink alcohol at all. He adds that those under 15 years of age are at greatest risk of harm and so, not drinking alcohol in that age group is especially important.

For info visit [alcohol.org.nz](http://alcohol.org.nz) or Alcohol Drug Helpline on 0800 787 797 for free advice.

**Kelvin Cruickshank** - from Sensing Murder - 15 June, Marton Memorial Hall, 397 Wellington Rd. Tickets \$70+ service fees R16. Door Opens - 6.30pm. Show 7pm - 9.30pm. Purchase tickets - [www.iticket.co.nz](http://www.iticket.co.nz)

**The winner of Marton's Go Ahead Hair Salon** - Guess the Date contest was Lois Brown. She guessed 22/7/1970 as the date Graeme Hendra started as a hairdresser. The actual date was 27/7/1970.

**THE Lounge**  
CAFÉ & PIZZERIA

224 BROADWAY | MARTON | 06-327-5358

Present this coupon to get  
**2 large pizzas for \$20**

  
Offer only applies to takeaway pizzas. Extra toppings at additional cost. Must present coupon at time of purchase. Offer ends 30/6/19

OPEN Wed-Thu 10am-3pm • Fri-Sat 10am-7pm • Sun 10am-2pm

**RANGITIKEI WHEELIE BINS**

- Kerbside collection
- Weekly or fortnightly
- Commercial pickups


**Locally owned and operated**  
Phone 06 327 8336 or 021 477 814

**smart environmental**  
100% New Zealand owned and locally operated

**BIN HIRE**

**Bin Hire Specials**

Various sizes from 1.8m<sup>3</sup> - 9m<sup>3</sup>


Prices may vary beyond Marton boundary  
Weight limits apply  
Please contact us now to discuss your requirements  
**Phone 06 324 0693**  
**0800 424 990**  
[www.smartenvironmental.co.nz](http://www.smartenvironmental.co.nz)

## ADVERTISING DEADLINES

Display Advertising – Tuesday 12 noon

Classified Deadline – 12 noon Wednesday

Read it Thursday! online [www.districtmonitor.co.nz](http://www.districtmonitor.co.nz)

In your box - on line and on Facebook.

**DistrictMonitor**

Phone: 06 327 7881

[districtmonitor@xtra.co.nz](mailto:districtmonitor@xtra.co.nz) [monitoradvertising@xtra.co.nz](mailto:monitoradvertising@xtra.co.nz)



## CLUB SCENE



### Forest & Bird Update

On 8 May, we remembered the extensive involvement in Forest & Bird by two ex-members, Tony Simpson and David Hanna who passed on recently. Our condolences were sent on to their families. Following this Margaret Woodbridge shared photos and experiences from a trip through Western China, into Nepal and Tibet. The route followed was far from usual tourist routes and frequently they were the only European people in the towns and villages. The group found that people were eager to have their photos taken, one man driving at speed, stopping to do a U turn and come back to the group for a photo opportunity.

At different times on the journey, they travelled on the highest train in the world, and later, for 22 hours on one, set on the permafrost, this giving a very quiet, smooth journey. They were frequently at very high altitudes, needing to use oxygen. China has a number of World Heritage sites. The group visited the Lijiang (home to the Naxi people), who are very small. Here they were with wonderful rock formations and many plants and flowers, often ones we cultivate in our gardens, seen growing wild. Unfortunately, even in Heritage Sites if the local government decide to undertake major work it simply happens with no consideration for the environment.

At times, the group was aware of a reluctance by locals to talk to them, in case they said something which would not be approved of. The inability to talk or act freely was apparent.

On Wednesday 12 June, members are invited to a potluck tea at 6.30pm in the Milne Room St Andrew's Church, Broadway followed by the meeting at 7.30pm when Bill Fleury from DOC Manawatu will talk about the progress of the Tiakina Nga Manu (Battle for our Birds) plan.

### Marton Friendship Club

Last Friday, the rain and wind was not kind, many arrived in heavy rain. However, after lunch we proceeded with our Dutch Auction -very successful. Thank you to those who participated. The day finished with Deana and John Scarbrough running a general knowledge quiz. This was a lot of noisy fun. Our day finished very quickly with a nice hot cuppa. Raffles won by: Jennifer Hawkins, Deana Scarbrough, Dawn Rowan, Jean England and Dawn Evans.

*This coming Friday 7 June, is our Marton Friendship Club 65th Birthday. 1.30pm start time. Raffles, entertainment, birthday cake and guests from many clubs. Come along, be there by 1.30pm.* This will be a special day. Members a party plate please. Entertainer is Robyn Curtis, a very capable singer and keyboard player. See you Friday. Please note early start 1.30pm.

### Marton Contract Bridge

Tue 21 May Farmlands Pairs (R1): N/S E Hughes & M Hughes 63.75, P Davidson & J Baddeley 55.83, J Bellamore & J Vickers 49.58. E/W J Meads & S Loudon 64.58, C Skou & S Marshall 63.33, M Bartels & J Ellery 45.0. Thur 23rd May Lilian Clyde Memorial Trophy (R1): N/S G Burne & M Gordon 55.0, D Cains & H Bostock 52.5, S Marshall & C Skou 51.25. E/W J Baddeley & P Davidson 62.5, J Ellery

& T Ellery. 55.42, W Jones & M Bartels 51.67. Tue 28 May Farmlands Pairs (R2): N/S S Marshall & C Skou 57.5, P Davidson & J Baddeley 56.5, J Ellery & M Bartels 53.5. E/W S Loudon & J Meads 63.0, M Hughes & E Hughes 57.0, J Sabine & J Bligh 55.0. Thur 30 May Lilian Clyde Memorial Trophy (R2): N/S S Marshall & C Skou 64.17, B Bolt & F Bertram 52.5, K Poppe & S Gruys 50.83. E/W M Bartels & W Jones 61.25, J Ellery & J Bligh 55.0, J McPherson & M Lourie 53.33.

### Turakina WI

May meeting - on Monday 20 May 10 members enjoyed the usual potluck lunch prior to getting down to business. This included finalising their thoughts on the remits which needed to be also discussed the following day in Wanganui at the Members Day so that our Federation president has an idea how to vote on behalf of all Wanganui members' at the upcoming AGM in Taupo 27 – 29 May. J Gillam read the motto "accept what is, let go of what was, have faith in what will be." Roll call was putting together small goodie bags for the Women Refuge - 34 will be delivered to the Women's Refuge Wanganui. 46 small jars of jam, also collected, will be given to Graze Out Cateters in Marton, to distribute to recipients of Meals on Wheels. June meeting will be held on the Wednesday 26 instead of the Monday 24 June. Competition results: Garden gem: 1st Pat Perry, 2nd Joan Marshall, 3rd Hazel Thomson. Floral: hand held posy. 1st = J Marshall & Lewanna McLean, 2nd P Perry, 3rd = J Gillam & G Manning. Cooking: 4 savoury filled pastry cases: 1st Carolyn Turtle, 2nd P Perry, 3rd = Linda Mancer & J Marshall.

## Playcentre to benefit from Hunterville glam ball



The kids at Hunterville Playcentre are getting ready for the ball fundraiser and want everyone to join the big night of glam.

## FROM THE PULPIT



Something appeared to them that seemed like tongues of fire.

If sin is our hardness of heart which makes us not love God and our neighbour as we should, then Our Lord's redeeming and saving act on the Cross can be summarised as an appeal to simply soften up and open up our hearts. He wants us first of all to open them up to His love for us, and then we will naturally and instinctively make that love the basis for our own lives.

The act of love of Jesus Our Lord in offering His life on the Cross is obviously for each and every one of us. But it is first of all based in His love for the God the Father. If our hearts are triggered by this act of love to respond in the same way, then our love too will be based first of all in God and thence outward to our neighbour.

Our hardness of heart is caused by various forms of self-interest, which makes our love less than sincere and less than full. Self-interest may consist in an inordinate concern for worldly possessions or for this world's pleasures. Ultimately though, our self-interest can be summarised as a concern for self-determination; i.e. we are not willing to suppress our own will and instead be submissive to the will of God. As we prepare for the coming of the Holy Spirit at Pentecost it is more than likely that it is this aspect of our lives that we need to concentrate on, in order to soften and open our hearts to Him; suppressing our own will for self-determination and instead, being submissive to the will of God. In this way, the Holy Spirit can truly fill our hearts and souls and allow us to love with the very love of God.

Fr Peter Brockhill.  
St Francis Xavier Catholic Parish.

Hunterville Playcentre will be the recipient of funds raised at their main fundraiser for the year - a mid winter Hunterville glam ball.

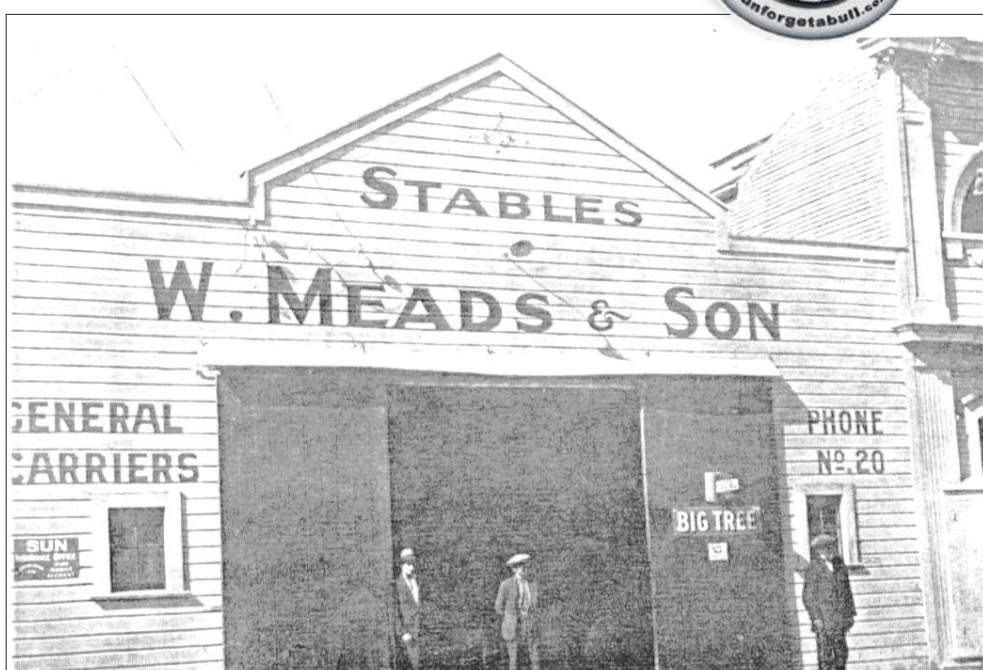
Due to be held on Saturday June 15 from 7pm, in the historic Hunterville Town Hall, the ball is anticipated to be the highlight of the local winter social calendar. Tickets for the evening are \$60 per person and include a continuous canape style supper, a drink on arrival and live band - Six Chairs Missing. Dress to impress!

Proceeds from a mid winter Hunterville glam ball, will go towards developing the playground and outdoor area at Hunterville Playcentre. Hunterville Playcentre is Hunterville's only early childhood education centre and has a long history providing play based, child led learning for families in the community. Established in 1956, Hunterville Playcentre is located on Bruce St in Hunterville and caters for around 25 families with children from birth to school age. Playcentre is a uniquely Kiwi early childhood education provider, where parents, caregivers and

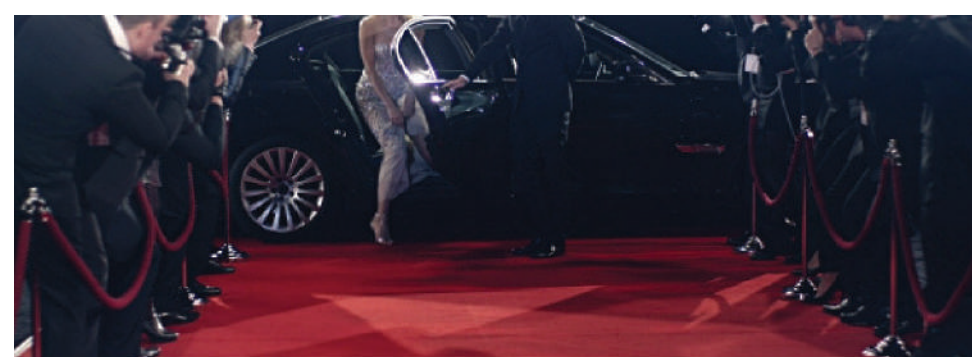
whanau are encouraged to stay and learn alongside their children.

Hunterville Playcentre runs sessions this term on Wednesdays and Fridays, from 9am till 1pm and warmly welcomes new families.

## RANGITIKEI HISTORY



Stables owned by W Meads & Son were in High St in Bulls, in the building that is the present home of the Bulls Museum. The company appears to have been a general carrier as well. The Meads family has been part of the fabric of Bulls for several generations; involved in business and all aspects of life. The date of the photo is unknown but it is part of the Bulls Museum extensive collection of historical photos, many of which they have no information about.



HUNTERVILLE PLAYCENTRE, IN ASSOCIATION WITH PROPERTY BROKERS BRINGS YOU A MID WINTER BALL ... JOIN US FOR A NIGHT OF FUN AS WE PRESENT

## A NIGHT ON THE RED CARPET

June 15 • 7 PM • Hunterville Town Hall  
Ticket Price: \$60 includes Live Band & Continuous Supper  
Tickets available from The Hunterville Village Bookshop

Property  
Brokers



# Marton teen wins Motorsport photo of the year



Marton teen Tayler Burke, 18, (pictured) has received a breakthrough award in his young photography career. Burke won the President's Award for the

single best shot at the annual MotorSport NZ awards held in Wellington recently.

Burke has been a budding photographer since his early teens, focusing on his motorsport passion but exploring all facets of the craft, from other sports through to astrophotography.

In late 2018, Tayler picked up his first big client, being contracted by Marton company 38 Digital to become the official photographer of the NZ Formula First Championship, a national racing class. His images have also been used by many drivers including Marton's Kaleb Ngatoa and Red Bull Racing junior driver Liam Lawson.

"It all started years ago when I went to Manfeild borrowing my friend's camera," says Tayler. "I got a lot of good feedback back then and just stuck at it and eventually purchased my own camera and just showed up to as many events as I could and just tried to get my name out there generally. It's funny looking back now on the first weekend I took photos, I cringe a wee bit at them but it's also cool to see the progress I've made."

The award-winning photo was taken at Taupo's Bruce McLaren Motorsport Park during the buildup to the Dennis Hulme memorial trophy race. The image was chosen for its simplistic, yet striking composition.

"I had been trying all weekend to get the style of shot but wasn't quite getting there with Liam Lawson's car. The colours just weren't working, but I finally got it with Jackson Wall's, however, I never thought it would be an award winner!"

"Sometimes less is more – a simply striking image that demands your attention, your eye is attracted to the image by the use of colour. An image that simply says let's race!" said the judge.

MotorSport NZ CEO Brian Budd also said, "Well done to Tayler Burke as a first-time award winner with his striking image for the President's best single shot award."

Tayler is currently working for his parent's engineering company in Marton and hopes to forge a career in photography and is grateful for the help and recognition he has received already.

"Obviously the long-term plan is to become a professional photographer and this award certainly is a big step towards making that dream a reality but there's a long way to go yet. "I've got to thank the motorsport community for all their support and the experienced photographers who have been kind enough to offer me advice."

The winning image below.



## Kelvin Cruickshank Live !

### Coming to Marton by popular demand

"Passing on messages from people who have died and are in spirit is what Kelvin was put on earth to do. However, since the incredible success of Sensing Murder there's been such a great demand from people on this side wanting private readings that it is just not physically possible for him to do them anymore.

The best way for Kelvin to be able to put people in touch with the loved ones they've lost - and also help them to understand how the afterlife works - is through his live shows, Kelvin Cruickshank Live"

**Saturday 15 June**  
**Marton Memorial Hall**  
**397 Wellington Rd, Marton**  
**Tickets \$70 (+ Service Fees)**  
**R16**

To purchase tickets go to - [www.iticket.co.nz](http://www.iticket.co.nz)  
 Door Opens - 6:30pm Show Starts - 7:00pm  
 Show Finishes - 9:30pm

# RANGITIKEI LINE BULLETIN

## Deliberation on submissions to the 2019/20 Annual Plan

Submissions closed on 1 May 2019, a total of 83 written submissions were received. Ten submitters presented to Council in Marton on 9 May and in Taihape on 10 May. All submissions were considered on 30 May. The main decisions were to:

- increase annual funding of community-led projects to \$100,000 (from \$50,000);
- contribute \$50,000 towards the new St John's Ambulance Station in Taihape and investigate funding assistance for the new St John's building in Hunterville;
- approve a trial period of four weeks (up to \$1,600) covering the full cost of euthanising unwanted cats trapped in Council traps;
- continue support to the Rangitikei Environmental Group (including a one-off grant of \$5,000 for fencing in reserves where Old Man's Beard is being controlled);
- support the Onepuhi and Porewa Community Group reinstate the reserve at the end of Onepuhi Road through the Parks Upgrade Partnership Scheme, mowing and grounds maintenance by the Parks and Reserves team;
- inform submitters advocating for the retention of the current century-old Mangaweka Bridge that Council will, in conjunction with the Manawatu District Council (as it is a boundary bridge), consider the feasibility of doing so once the economic analysis has been completed and submitted to both councils;
- investigate horses being included in the proposed shared pathway around Marton B & C Dams currently being replanted;

- meet with representatives of the Kauangaroa Marae to support the marae's relocation.

Council decided against funding a programme for the de-sexing and micro-chipping of cats.

The final Annual Plan will be prepared for adoption on 27 June.

## Adoption of fees and charges for 2019/20

Council considered the impact of the recent legislation requiring three-yearly inspections of swimming pool fences. From 1 July, the first inspection fee will be waived. Discounted hall hireage will continue for local non-profit community organisations. Registration fees for owners with five or more working dogs will be capped. Council considered how neighbouring councils charged building consent fees and decided to retain the present schedule.

## Review of grants assessment process

Following the first round of funding administered through the Smartygrants™ system, Council's Finance/Performance Committee decided to review how the process worked, including the nominated assessors from the Community Boards and Community Committees.

The Committee decided to continue with the Smartygrants™ system for one further round. Investigation on whether Council's website can receive grant applications will be looked at as an alternative.

## Council's approach to its vacant land in Bulls

Council agreed its position over disposal of vacant land at Walton and Johnston Streets as:

- That Council will not subdivide or develop properties prior to disposal, either by itself or as a joint venture with another party;
- Expressions of Interest be invited for potential purchasers to submit separate proposals for purchase of each of the properties recording:
  - purchase prices;
  - detailed development plans including timeframes for subdivision and sale of residential sections;
  - prospective purchaser's acknowledgement that all Es of I will be assessed against the Policy on Disposal of Surplus Property 2015;
- That Council determines the non-financial assessment criteria be given a weighting of 25% for the disposal of the surplus properties

## Youth Awards

On 23 May 2019 a crowd of 300 attended the 2019 John Turkington Forestry Youth Awards. The category winners were: Bridget Bone (Rotary Club of Marton Leadership), Daisy Power (River Valley Eco Warrior), Tia Wright and Lydia Whyte (BJW Motors Change Maker), Onyx Lye (Hautapu Pine Youth in Sport), Alyce Turner (The Downs Group Giving Back), Sophie Ward (New World Marton Youth for Youth), Rotary Interact Club of Rangitikei College (Fortuna Forest Products Youth Group), Todd Sutton (Ngā Wairiki Ngāti Apa Youth In Apprenticeship), Shawn Bonner (Fortuna Forest Products Youth In Employment). Alyce Turner was awarded the Outstanding Youth award.

Council is very appreciative of the generosity of the sponsors. A full description of the awards, winners and runners-up is on the Council website.



# Caring for livestock in wild winter weather

With winter now starting to bite, the Ministry for Primary Industries (MPI) is reminding pastoral livestock farmers of their animal welfare responsibilities, whether animals are kept at home, or sent off-farm to graze.

“This time of year can be challenging for farmers, with wet and muddy conditions increasing risks to the welfare of their livestock,” says Kate Littin, manager Animal Welfare.

“New Zealand’s codes of animal welfare require livestock to have access to areas free of surface water and mud and appropriate shelter from adverse weather.

“Animals will refuse to lie down on wet ground and can then become stressed, stop eating and are more susceptible to lameness.

"There are a number of ways farmers can mitigate risks to animal welfare over winter.

## Taihape Panel Call Us Before You Call Your Insurance Company

Vehicle Insurance/Rust Repairs  
Assessments for all Insurance Companies  
Courtesy car available

Contact Earl Rae  
06 388 1605 or 022 073 3011



“If there is a spell of extreme weather or prolonged wet conditions, you may need to move your stock off the crop to drier land and you should plan for this possibility – having a ‘plan B’ is the key.

“Clean drinking water must be available for animals at all times. Owners are still responsible for the welfare of their stock while they are off-farm for winter grazing and should check on the conditions, including their access to shelter and water.

“When transitioning from pasture to crop and back again, stock can be negatively affected. Ensuring you follow a gradual transition plan when moving your animals will prevent issues.”

MPI recommends talking to your vet for help with planning and any animal health concerns. Resources to help farmers with their winter grazing management are available online from DairyNZ and Beef+Lamb NZ.

# New deputy welcomed to Rangitikei College



New Rangitikei College deputy principal Michelle Cameron (centre) was welcomed with a full school powhiri on Wednesday morning.

She was accompanied to the college by her whanau and pupils, parents and teachers from James Cook School where she has been a very popular and successful principal for over 10 years.

Rangitikei College's kapa haka group greeted Mrs Cameron and kaumatua Alan Harrison and Tane Rapana welcomed her with a korero.

Mrs Cameron took up her new role this week. College principal Tony Booker says she will be a valuable addition to the college staff and valuable for the experience she will bring to the junior school.

# Tertiary provider secures new education lead role



Former Marton woman, Naomi Patterson, is the new Education Team Leader at Training For You.

Whanganui tertiary education provider Training For You is pleased to announce a new appointment to their management team. Joining an overall team of 22 staff members, Naomi Patterson has been recruited to the organisation as the new Education Team Leader.

Based at its Whanganui campus in Ingestre St, the newly-created Education Team Leader role will oversee five of the provider’s on-campus education programmes.

Naomi brings to Training For You a wealth of experience and knowledge of the NZ qualifications framework, and NZQA compliance in assessment and moderation. She also has a sound knowledge of literacy and numeracy progressions for youth and foundation level adult learners.

Describing herself as “local through and through”, Naomi was born in Feilding and raised in Marton. She attended Rangitikei College and married a Whanganui man from Kaiwhaiki. All but two of her children were born in Whanganui. Her natural mother is Maori, with family hailing from Waitara. She was adopted by a Cook Island mum and a pakeha dad and describes a multifaceted heritage, “I was raised in a Cook Island kitchen. It’s quite colourful, in terms of who I am in my whakapapa and it helps flesh out who I am as a person through birth, as well as how I was raised.”

In her role as Education Team Leader, Naomi will be tasked with mentoring, guiding and supporting the teaching team at Training For You and leading the delivery of programmes to maximise student achievement and satisfaction.

She has Level 5 Diploma in Social Services from Northland Polytechnic, a social work degree from Massey University in Albany and a Bachelor of Arts majoring in Maori Studies and Social Policy, with more focus on political processes, and legislations.

Story and photo by Karen Hughes.

FOR ALL YOUR TRAVEL  
NEEDS CONTACT  
NIGEL BUCK 06 388 1008



helloworld Taihape 108b Hautapu St  
taihape@helloworld.co.nz

# Free Hearing Tests

Farmlands Marton

21<sup>st</sup> June

ALL WELCOME!

Are you always having to ask people to repeat themselves?  
Is your TV too loud for other people?  
Do you miss the sweet purr of the tractor?  
If you think you might be affected by hearing loss, don't wait any longer.

TO BOOK

Call 0800 45 45 42 or email [info@tritonhearing.co.nz](mailto:info@tritonhearing.co.nz)

Farmlands Marton  
61 Pukepapa Road  
(06) 327 7149  
[marton@farmlands.co.nz](mailto:marton@farmlands.co.nz)



TRITON  
HEARING



# Autumn Gardening

by Wally Richards



## Grapes

An email from a reader asked: "Hello Wally, Now that the end of the grape season is over. I wondered if you might consider writing an article about pruning, disease, and general care of the vines; getting ready for next year. I've found over the years that very little is written about table grapes, I feel sure I cannot be the only one with problems. Hope you can assist me with this problem. Thanks....."

I always envy those gardens that have a large rambling grapevine, years old, producing an abundance of juicy grapes every year with little or no problems. I have yet to achieve that goal and know, that the reason, is wrong growing conditions and even when the conditions were right, I would move house and leave a nice vine for the next owners.

Over the years, I have purchased vines, taken cuttings from vines I would die for and even grown seedless grapes from seeds. I've even relocated one vine several times over a number of years, to different spots in the garden and ended up with it planted in a container and the end result, after about 10 years and, only the odd grape to eat, it finally died, likely from confusion.

Grapes need a cool winter while they are dormant and a warm/hot summer, when in foliage and producing fruit. Different types of grape have different temperature needs so one should try and find a vine type, that is suitable for their climate. Early autumn frosts can wipe out a crop and late spring frosts can damage new shoots. A mild summer will affect a crop by not ripening properly and lack the sugars to sweeten the fruit. Humid summers will affect the fruit causing diseases to attack and thus loss of the crop.

With our changing climate, a vine that was once a great producer, having a cold winter followed by a hot, dry summer, becomes a poor producer, with disease problems because of the climate. This can also be part of the reason of our reader's problem with humid conditions or a milder summer and needing a better spray program to overcome the diseases.

Commercial growers are much more on the ball, to compensate for possible problems as their livelihoods are at risk plus they likely have commercial experts to guide them in disease prevention.

Grapes are best grown on free draining soils of low fertility. Feed your grape and you are likely to have a great canopy of foliage at the expense of the fruit.

Grapes will grow on most soil types as we see in NZ. If grapes are not pruned each year, they develop many unproductive shoots and soon become a tangled mess of leaves and stems. At least 90% of the previous season's growth needs to be removed each winter.

Vines are either spur pruned; this is where one or two branches are permanently trained along a trellis or wire and the side branches are cut back to two or three buds. This is often what you see when you travel past a vineyard.

Otherwise they are cane pruned; where one or two new branches are selected each winter and trained along the wires, and the rest are removed.

There are two main pests of grapes - a small aphid that feeds on the roots and mealy bugs. Using Neem Tree granules in the root zone and Super Neem Oil sprays in the foliage will help control these pests.

Diseases include powdery mildew, which you can use baking soda and Raingard to prevent and control or you will find the Super Neem Oil keeps powdery mildew under control..

For downy mildew; a monthly spray of Perkfection Supa will help with control and can be added to the baking soda spray.

Botrytis is a grey mould that is prevalent in warm, damp conditions, and rots bunches



### Real Life Therapy by Shirley Henderson

## For Our Mums xxx

I just want to give a shout out to all Mums! You deserve a high five, a fist pump and a huge, big hug from the rest of the world.

Birthing, nurturing and developing the next generation is the most important job on planet Earth and I believe, Mum's are not given enough credit for the great work that they do. It's so hard and so rewarding... and these days, with social media, it's so demanding. The pressure to be everything to everyone. The pressure to have perfect children, with perfect health and perfect manners. The pressure to hold down not one but three, highly exhausting jobs – motherhood, paid employment and domestic goddess. The pressure to look good at any given moment of the day and to provide the most amazing selfies for sharing.

Mums – can I encourage you to take a breath? Life is going so fast. Kids are only kids for a short time. Start being as kind to yourself as you are to everyone else. Realize that every generation before you has felt all of the emotions that you do, only we were not under as much scrutiny and therefore not as open to criticism.

Being human is not a failure. Being tired is part of adulthood. Being exhausted, overwhelmed and emotionally wrung out is not. Life is for living, kids are for enjoying, you are the oil in your family that keeps it all running smoothly and above all things – you are special too.

So, from me – thank you dear Mums, you are doing a fantastic job!

### Shirley Henderson Massage & Hypnotherapy

• Professional • Experienced • Confidential



#### I can help with...

- Stress & Anxiety relief
- Fears, Phobias & Habits
- Smoking & Addictions

### CLINIC IN BEAUTIFUL BULLS

Senior Professional Clinical Hypnotherapist

Remedial and Relaxation Massage Specialist

BY APPOINTMENT ONLY

Call Shirley 06 356 4871

text 027 269 0655

of grapes. Growers reduce the risk of botrytis by plucking leaves around the berries, allowing air to circulate.

Also, after the fruit has set, you should shake the vine vigorously to remove the spent flowers at the base of the fruit. Left on, these will rot and cause rotting of the fruit.

Very occasionally, a condition known as noble rot develops in botrytis-infected grapes. The berries shrivel, then dry out and don't rot. They produce a sweet, full-flavoured wine. (Another aspect of our reader's problems)

Liquid Sulphur is the best control of botrytis-infected grapes but should not be used if Super Neem Oil was used recently. Regular sprays of Condys Crystals can also help.

One thing is that grape vines cannot handle herbicides such as Roundup as they are very sensitive like tomatoes.

New season grape plants, will be coming available about now so check with your local garden centre to see what varieties they can provide.

If you know someone with a good variety of eating grapes locally, you maybe able to get some cuttings from the prunings and strike them to grow your own.

Coming from the same area you should find they will be suitable for the local conditions.

Also remember - when you prune your roses you can take cuttings from them to strike and increase your rose gardens.

**Problems ring me at 0800 466464 (Palmerston North 3570606)**

**Email wallyjr@gardenews.co.nz**

**Web site www.gardenews.co.nz**

## GET US TO CHECK YOUR VEHICLES NOW FOR SAFE WINTER MOTORING!

**Ask for Brad  
for competitive  
pricing!**

**I also do....**

**TUNE UPS & SERVICES  
TYRES AND BATTERIES  
AUTO ELECTRICAL  
LIGHT ENGINEERING**

# G-MECH

GLASGOW MECHANICAL

**8 Hammond St, Marton Ph 06 327 6979**

MARTON BUSINESS HOUSE  
A CHRISTMAS

# Winterfest

MARTON JOCKEY CLUB INVITES YOU TO BE A PART OF THIS  
GREAT DAY OF RACING ACTION

**AWAPUNI RACECOURSE SATURDAY 6 JULY**

### BUSINESS HOUSE SUPPORTERS PACKAGE

**\$400 + GST**

#### Package includes:

Return bus from Marton to Awapuni

Facebook acknowledgement as a supporter and sponsor of the Marton Jockey Club.

Two tickets to the Christmas Winterfest function in the stunning Silk Lounge including:

- Superb Christmas themed buffet luncheon followed by dessert.
- Beverage package (includes standard beer, wine, tea and coffee, and non-alcoholic beverages) throughout the day.
- Racebooks and pets.
- Business House Mock Punters Club will be run throughout the day.

**Additional tickets \$125.00 Incl GST**

For further information contact Deanna on  
06 356 4940 or email  
hospitality@manawaturacing.co.nz







### MARTON LADIES' GOLF

Wednesday 29 May. 13 brave ladies dismissed the wind and played for the Par Cup. Results: silver: R Williams all square, J Ritchie -4, M Simpson -8. Bronze 1: G Burne -1, A Flemming and S Marshall -2, R Morrison -3. Bronze 2: E Bowler -9. Haggie for balls and vouchers: 1st R Williams, 2nd G Burne, 3rd S Marshall, 4th A Flemming. Twos: G Burne on the 6th. Sponsored balls: R Morrison, J Ritchie and S Ballard.

### TAIHAPE GOLF

Sunday was the first of the four club championship qualifying rounds. With the tees stretched to the testing back blocks, scoring was subdued, with the extra length required and less run, after the week's deluge of rain, making conditions soft underfoot. Nonetheless, last year's senior top qualifier Duane Dick, was the shining light - hitting the ball well for a 68 net and making a statement of contention with 76 off the stick. The resurgent Denny Thompson holds the joint top senior qualifying position with Dick, after round one, also with a 76 off the stick. Danny Mickleson and Kevin O'Brien both came in with a 70 net in the intermediates. Merv Tapp led the way in the junior B division, also shooting a 70 net. There was a joint three way for 71 net between, Gary Thomas, JJ Walker and James Fannin. The longest putt novelty was nailed by Barrie Randall. The Monday chicken run was hard fought, with a large contingent embracing the additional day off work in the sunny conditions. Leading the haggle, with extra energy extracted from sun on the panel, was Gary Cleaver with 43 points. Kevin O'Brien held solitary second place, with 40 points. Jimmy Mickleson made 38 and his father Danny Mickleson closely followed with 37. Marian Cleaver was top lady with 35 and Merv Tapp picked up the last chicken with 34 points. Twos were plentiful, with Danny Mickleson securing twos on the 12th and 14th; Gary Cleaver on the 6th; Alan Thomas on the 12th and Merv Tapp on the 14th. The two novelty, longest putts on the 9th and 18th, were won by Dale Hunt and Danny Mickleson respectively. This Sunday the president's trophy final has been scheduled to be played at Marton against Linton. At home, the 2nd club champs qualifying and Wilson is in competition. Duty manager is Barrie Randall.

### RANGATIRA GOLF

Results 18/5/19: men - qualifying rd 2 medal - J Cooper 69, M George 69, R Wilson 70, R Nimmo 71, W Guiniven 71, C Leary 71, B Barrell 72, G Eldridge 74, B Callon 74, D Graham 74, R McVerry 74. Putts: C Leary 27. 25/5/19: PGG Wrightson's tournament - senior women - J McAlley 40, M Brennan 32, N Martin 31, L Worsford 30. Junior women - J Griffiths 35, L Gordon 33, J Lambert 33. Senior men - R Nimmo 39, S Baker 37, T Archild 36, R Law 36, M George 35, B Pickett 34, A Lock 32, N Forlong 32. Intermediate men - W Guiniven 40, A Bonnor 39, H Potaka 39, J Mohn 39, G Eldridge 37, A Richardson 37, B Callon 35, H Lilburn 34, D McKenzie 34. Junior men - B Dickinson 47, A Hurley 42, Guiniven 41, J Holden 41, C Renshaw 39, M Tapp 37, A Sinclair 36, D Graham 34, D Fallaver 33. Non golfers - O Gordon, R Deans, A Lambert, R Collier. Best nett Wrightson trophy: B Dickinson 61. Twos: G Eldridge, J McAlley, R Nimmo x2, J Marshall, S Baker, N Finlay. Nearest the pin: #4 A Richardson, #8 R Lambert, #12 B Pickett, #14 M George. 29/5/19 - women - 2nd qual, E McDonald. LGU: putting - L Worsfold 65, C Gregory 72, J McAlley 72, J Alabaster 74, M Walshe 75, N Martin 76, L Leary 76, R Rainey 81, H Bismark 81. Twos: L Worsfold. Putts: C Gregory 28. 29/5/19 - 9 hole par - R Florence +1, W Totman -1, P Ross -2, T Doorey -2.

### MARTON GOLF CLUB

Thursday golf, 30 May. Stableford; 1st -37 points Alan Bates, 2nd - 36 points Steve Muir, 3rd= - 34 points Martin Rothman, Billy Beck & Jarrad Calkin, 6th - 33 points Graeme Velvin. Crunchie bar (25 points) Mr McDermott. Sun 2 June - Queen's Birthday ambrose tournament: Saturday's competition was cancelled due to the weather, so the 27 & 18 hole rounds were played in kinder weather on Sunday. Thanks to a group of our Auckland remote members for making the trip down to their home club and to club members for making them feel so welcome. Results 27 holes: Darin Arnott & Ken Westwood 60, Colin Williams & Adrian Duncan 60, Stu Amor & Radar 60, Caroline Watson & Calvin Field 60. 18 holes: Robbie Fryer & Andrew Richardson 39, Rob Jones & Craig Harley. Twos: Colin Williams. Closest to the pin: 3rd Caroline Watson, 6th Bruce Craig, 17th Stu Amor. Coming events: working bee Tues 4th, 9am. Duty: Sat June 8 - T Hammond. Bar: C Bary & R McDermott. Duty: Sun June 9 - ladies committee.

*Sport continued on pg 11...*

### Public Notices



### Temporary Closure of Pukepapa Road, Marton, Rail Crossing

Rangitikei District Council wishes to advise that PURSUANT to Section 342 (b) and the Tenth Schedule of the Local Government Act 1974, NOTICE IS HEREBY GIVEN that a portion of Pukepapa Road, Marton will be closed from 6.00am to 5.00pm on Sunday 9 June 2019 and Saturday 15 June 2019, for the purpose of upgrading the rail crossing at this location.

Pukepapa Road Rail Crossing will be closed to all vehicular traffic.

Rangitikei District Council regrets any inconvenience caused.

**Ross McNeil**  
Chief Executive



### Rangitikei Under 13 Boys & Girls Hockey

Rangitikei Hockey Association is calling for expressions of interest from voluntary coaches and managers of the Under 13 representative hockey teams.

**Please email rangitikeihockey@gmail.com**  
**Expressions of interest to be in by 14 June 2019.**

### Employment



### Cleaner - permanent part-time role -including weekends and public holidays.

We are looking for an experienced, reliable cleaner. We would like visitors to be impressed with our high standard of service and our commitment to excellence, when visiting our community facilities.

The position involves midday cleans at public toilets at Bulls Domain, Rangitikei Junction and Bulls Information Centre sites. At times you may be required to provide cover for our other sites within the district.

Duties will include: restocking of dispensers, cleaning of all surfaces, including windows, floors, ceilings, walls and fixtures. Hours of work and a detailed description is provided in the job description.

To be successful in our cleaning roles you will ideally have the following attributes: honesty, punctuality and attention to detail, initiative and good communication skills. You will be physically fit and have a willingness to help out at short notice. An ability to follow health & safety requirements and work unsupervised is also required.

Please do not apply if you are unable to work flexible hours, including statutory holidays and weekends.

Please apply either in writing, or via our website [www.rangitikei.govt.nz](http://www.rangitikei.govt.nz), attaching a C.V. or alternatively, tell us about your relevant experience in your written application. Applications may be left at the Rangitikei District Council, 46 High Street, Marton or Bulls Library, 73 High Street, Bulls.

As employees of Rangitikei District Council you will adhere to our values: we care about our work, our community and each other.

**Enquiries about this vacancy can be made to Sheryl Srhoj, on 06 327 0099.**

**Applications close on Friday 14 June 2019 at 4pm.**

**Applicants for this position should have a full NZ driver's licence and NZ residency, or a valid work visa. The Rangitikei District Council is an Equal Employment Opportunity employer.**

### Public Notices



### Dog Control Fees 2019/20

Under Section 37(6) of the Dog Control Act 1996, the following are the Dog Control fees fixed for the Rangitikei District for the registration year commencing 1 July 2019. (All fees are inclusive of GST)

#### YOUR DOG REGISTRATION CHOICES

This fee structure has been created to reward those dog owners who act responsibly and comply with the requirements of the Dog Control Act 1996, the Rangitikei District Council's Dog Control Bylaw and Owner Responsibility Policy. Please note: If you are late registering, you will forfeit the "Approved Good Owner" status for that year.

Working Dogs Fee capped for owners with 5 or more working dogs	\$43.00
Working dogs (late payment) Capped fees do not apply	\$65.00
Non working dogs	\$132.00
Non working dogs (late payment)	\$198.00
Non working dogs de-sexed	\$89.00
Non working dogs de-sexed (late payment)	\$133.00
Good owner dog	\$62.00
Good owner dog (late payment)	\$191.00 (desexed) or \$198

#### Dangerous Dogs

Section 32(1)(e) of the Dog Control Act, Effect of Classification as Dangerous Dog states "...must, in respect of every registration year commencing after the date of receipt of the notice of classification, be liable for dog control fees for that dog at 150% of the level that would apply if the dog were not classified as a dangerous dog".

#### OTHER FEES

Replacement Tags		\$2.00
Micro-chipping and registering onto National Dog Database		\$43.00
Impounding Fees	First Offence	\$137.00
	Second Offence – within 12 month period	\$193.00
	Third Offence – within 12 month period	\$248.00
Sustenance Fee	Per day per dog	\$13.00
Destruction Fee	Per dog	\$38.00

If your dog is impounded, it will be your responsibility, after full payment of outstanding registration and fees, to collect your dog from either the Wanganui, or Feilding pound. If the dog is not collected, you will still be responsible for all costs.

### South Makirikiri School Board of Trustees' Election

#### Declaration of Parent Election Results

At the close of nominations, as the number of valid nominations was equal to the number of vacancies required to be filled, I hereby declare the following duly elected:

Christina Belton, Kelly Greer, Tony Maas, Carl McDonald, Brendon Shoebridge.

**Signed Janeen Lampp**  
**Returning Officer**

**For Hunterville,  
Marton, Bulls**

**WE ARE HERE TO HELP  
PLEASE GIVE US A CALL**  
**Shirley Murray 06 327 7300 or 027 605 9026**  
**(Support Co-ordinator)**

**Cancer Society**  
Te Kāhui Matepukupuku  
o Aotearoa



# Rangitikei District Monitor

# LOCAL SERVICES

## Support Local Rangitikei Businesses



**MARTON LAUNDROMAT**  
SELF SERVICE 5AM - 11PM  
SERVICED 8AM - 5PM  
ASK ABOUT OUR ELDERLY RUN: TUESDAYS.  
06 327 5569. LOCALLY OWNED.

Thinking Real Estate?  
Call Carol Lewis or Mike Lewis  
0800 627 866

**teamlewis**  
RE/MAX  
Go For Sold



AIPOne Limited MREINZ | 06 555 4324 | 165 Broadway Ave | Licensed Under the REAA (2008) | Each Office Independently Owned and Operated

**CENTENNIAL PARK DAIRY**  
OPEN 7 DAYS 7am - 7pm



176 BROADWAY, MARTON  
PH 06 327 7398

**COBHAM PLUMBING AND DRAINLAYING**



LOCAL SEPTIC TANK CLEANING  
& WATER TANK CLEANING

- \* Woodfire sales, repairs, installation
- \* Septic Tank & Effluent Systems
- \* Drain Cleaning Machine
- \* Chimney Cleaning

171 Broadway, Marton Phone 06 327 8918

**DOMESTIC WATER SERVICES**



0800 400 135

Layton Hammond 027 4421 629



**STORAGE UNITS**

- Clean, Dry, Secure, Convenient.
- 7m<sup>3</sup> upwards to full Household.

See website for details or Phone owner Joe Karam to inspect.

34 High Street Marton | www.jkselfstorage.co.nz | Ph 06 327 6030

**MARTON PANEL & PAINT**

Broadway Heights, Marton  
Ph Ian on 06 327 7455

**ROBBIES MECHANICAL SERVICES**

SALES-SERVICE-REPAIRS  
Mowers, chainsaws, motorcycles and more

"All personally guaranteed"

404 Wellington Rd Marton  
PH 06 327 7115

**HARVEY AND CALKIN GLASS**



Household Windows  
& Car Windscreens  
Troy Calkin

385 Wellington Rd, Marton.  
Ph: 327 8750 A/H Ph 327 6917

**TANK CLEAN**

- Septic Tanks
- Water Tanks
- Grease Traps

Contact Tim Spetch  
06327 7806  
027 974 2445  
timspetch@hotmail.com

**HOGAN PLUMBING**



Plumbers, Drainlayers  
& Roofers  
Natural Gas Sales  
& Installations  
Wood Fires

Phone 06-327-7838

**BEN'S DINGO** FREE QUOTES

Hole Boring 250mm 350mm 450mm 600mm  
Trenching 4 in 1 Bucket Rotary Hoe  
Pole Sheds Water Lines Effluent Lines  
Power Cables Section Work Urban Fence  
Packages Cleaning Covered Yards Calf Sheds  
Stables and more from this little digger!  
Ben & Jackie Lucas  
Marton  
06 327 8792 027 684 1305



**RAYNER BUILDING LTD**



Houses • Farm Buildings • Concreting • Alterations • Additions  
All qualified tradesmen

**Ph: 027 2727 047**

**Lawnmowing**  
We Love to mow your lawns!

Free Quotes

Hedges, tree trimming, section  
tidies, rubbish removal

0800 800 286

www.crewcut.co.nz

**CREWCUT**  
LAWN & GARDEN

**OHUTU MEAT PROCESSORS**

...from paddock to plate...

Ph 06 388 0603

Alistair Mclean 027 232 4584  
Nathan Mclean 021 0263 1534

**WE TRAVEL**

We now Vacuum Pack  
We kill & process dog food  
All small goods and gluten free

**TILER**

Felipe Rodriguez

Installation  
Repairs

Certified  
Waterproofer

Mobile: 021 181 2072

Ph: 06 343 1234

Email: delchico1@outlook.com

No Job Too Small

**RANGITIKEI SECURE STORAGE**

Ideal secure lock-up for your

- Boat • Caravan
- Car • Household goods
- and much more...

different sizes available for short or long term  
term **PH 021 163 6399**

**TV REPAIRS**

**REDWOOD TV**  
TV & APPLIANCE REPAIRS AND INSTALLATIONS



- Aerial Installs
- Washing Machines
- Dishwashers
- Stoves
- Fridges
- TVs

Trevor Ph: 06-327 7258 | Mob: 027 662 2809  
muntedtv@xtra.co.nz

**Your function specialist for over 100 guests**

Awapuni Racecourse, Palm North

Lewis Jones

Ph 0800 11 FOOD (24 Hours)

email:creativecatering@xtra.co.nz

**creative CATERING**

Heat Transfer Units • Freeview Aerial  
Upgrades • Commercial Wiring •  
Domestic Wiring • Home Automation  
• Security cameras & alarms

**Electrical Laser**

Phone/text 027 280 4667  
Office 06 327 5544

palmerston.north.central@laserelectrical.co.nz



- Outdoor Power Equipment
- Trailers/Chiller • Digger
- Temporary Fencing
- Portaloo's and more.

Enquiries welcome

**VISION EXPERIENCE OPTOMETRIST**



BROADWAY, MARTON  
Phone 06 327 7589

**HARTYS BUILDING & MAINTENANCE**

Over 30 yrs knowledge & experience.

Renovations • Additions  
Bathrooms • Decks

Phone Brett 021 960 536  
or 06 322 1922 A/H

**CAREY'S JOINERY**

Come and see Shaun  
& the team to fix your  
"kitchen envy"!

Ph/fax 06 327 7949 - 7 Bowen St, Marton  
Mob 027 244 8866 - Email careysj@xtra.co.nz

**mcilwaine**  
-BUILDING SOLUTIONS

"No Job Too Small"

Qualified Tradesmen - New Housing,  
Alterations and Additions, Joinery, Timber  
Windows, Maintenance,  
Light Commercial,  
Farm Building, Concrete  
Work, Aluminium Screen Doors



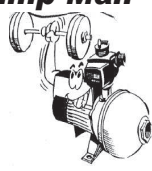
35 Russell St,  
Marton Ph 06 327 4723

**Water Pumps**

**'Call The Pump Man'**

Just call 0274453 124

and Simon will  
help you with your pump  
requirements.  
Expert sales and service  
from the team at...



**DOWN'S CONTRACTING ELECTRICIANS Ltd**

**G-MECH**  
GLASGOW MECHANICAL

Mechanical Repairs WOF Repairs  
Tune-ups & services Tyres & Batteries  
Auto Electrical Light Engineering  
06 327 6979  
8 Hammond Street, Marton  
g-mechltd@outlook.com

**Rangitikei/Wanganui**

If you are contemplating selling your Farm or  
Lifestyle then call Doug Glasgow, an experienced  
and confidential Agent for an appraisal.

B 06 327 4732 H 06 327 3723 M 027 204 8640

www.pggwre.co.nz

PGG Wrightson Real Estate, 99 Wilson Street, Wanganui





Business Notices

For Hire

CHURCH SERVICES

**SELL YOUR HOME  
WITH MARK & COLLEEN** 



**GREAT  
COMMISSION RATE**  
FREE ONLINE  
ADVERTISING  
FREE  
PROFESSIONAL  
PHOTOGRAPHY  
AWESOME SERVICE  
  
CENTURY 21 PREMIER  
Licensed under REAA 2008



**MARK EDWARDS**  
027 570 2102

**COLLEEN EDWARDS**  
021 031 2442

  
**26 CHURTON STREET PH 06 345 7017**  
**MARQUEES · MACHINERY HIRE · PARTY HIRE & SALES**




**GREAT RANGE OF PORTABLE TOILETS**  
**100% Wanganui Owned & Operated**  
[www.hiremasterwanganui.co.nz](http://www.hiremasterwanganui.co.nz)

**MARTON BIBLE  
CHAPEL**  
*Where you can find the meaning  
of life*  


**Sunday 9 June**  
  
**Worship Service  
10am**  
**Speaker:**  
Mike Riccardi (DVD)  
**Subject:**  
The Character of  
Saving Faith  
  
**All Welcome**

**ST FRANCIS XAVIER CATHOLIC PARISH**  
**Weekly Masses**  
**Monday - Thursday - Friday**  
**Marton 7.45am** Adoration - Mass 9am  
**Bulls Tuesday** Mass 10am  
**Marton Wednesday** Mass and Adoration 10am  
**Weekend Masses**  
Marton Saturday Mass 10am - followed by  
Reconciliation  
**Bulls Saturday Mass 6pm**  
**Marton Sunday Mass 9.30am** - 2pm Devotions  
**Rata Mass 9am, 4th Sunday**  
**of month. Whangaehu**  
**masses suspended.**  
**FR PETER BROCKHILL**  
**RUSSELL ST, MARTON**  
**Ph 06 327 7840**





**BRIAN BAILLIE**  
**MUSICIAN**  
Solo, duo, or full band options  
available for all occasions.  
  
**Contact Brian**  
**027 2299 303**  
**brianbailliemusic@gmail.com**  
**facebook.com/brianbailliemusician**

**027 332 4417**  
**Digger Hire**  
1.7 tonne digger  
1/2 day and full day rates  
  
**Available 7 days a week**

**CONCRETE GEAR HIRE**  
**Dry hire hand held concrete cutters**  
**Walk behind floor saws**  
**Concrete power float**  
**Concrete breaker**  
**HALF AND FULL DAY RATES PH 027 2727 047**

**RL & KM Dear**  
4 Tonne Truck & Digger Hire  
Water Cartage  
Ph Ross 027 432 2331 or 06 322 1745

For Sale

**Tommy's  
Firewood**  
Mac \$120 per cube  
Pine \$100 per cube  
Poplar \$80 per cube  
Ph 06 322 1397  
027 6466 438

**Post Peelings,  
Sawdust and  
Firewood**  
Ph 06 322 1670  
027 422 1670

  
**CLASSIFIED  
ADVERTISING**  
**Phone 06 327 7881**

Public Notices

**Taihape Music Group  
Presents**  
**A SUNDAY RECITAL**  
Ingrid Culliford - flute, John Seagar - violin  
accompanied by Kris Zuelicke  
and Helen Gordon  
Taihape Women's Club Sunday 16 June 2pm  
Door Sales \$20  
Afternoon tea to follow

**Grey Power Rangitikei**  
Tuesday 11 June at 1.30pm  
Netball Court Hall, Totara Street, Marton  
Guest speaker: Peter Scott.  
Any queries phone 06 327 8984

**ST MARTIN  
LUTHERAN  
CHURCH**  
94 Pukepapa Rd  
Marton  
  
**Sunday 9 June**  
**9.30am**  
**Worship Service with  
Holy Communion**  
**Led By:**  
**Trevor Jurgens**  
  
**Everyone Welcome**  
**Phone 06 327 8092**





**ST ANDREW'S PRESBYTERIAN  
CHURCH MARTON**  
This Sunday - Family friendly service at 9:30am.  
This week's message is from John 7: 1-15  
"The Festival of Tabernacles"  
  
Other weekly activities:  
Kids on Broadway (school years 5 - 8)  
Wednesday 4:30 - 6pm  
SALT Youth (high-schoolers) Friday 7 - 9pm  
Companionship 11:00am to 2:00pm Wednesday -  
drop in for some fellowship and fun.  
  
**All Welcome**



**Rangitikei Anglican Parish**  
**WORSHIP SERVICES**  
  
**Sunday 9 June**  
8.00am St Stephen's, Marton  
10.00am St Stephen's, Marton  
  
**Wednesday 12 June**  
10.00am St Stephen's, Marton  
  
**Contact: Parish Office 06 327 8398**

**ST ANDREW'S PRESBYTERIAN  
CHURCH TURAKINA**  
**Sunday 9 June - 10am. Rev. John Peill.**  
**Kids Friendly Church.**  
**Country Friendly Service**  
**Morning Tea to follow. All Welcome**

Funeral Directors

**BEAUCHAMP**  
- FUNERAL HOME -  
  
**Proudly serving the Rangitikei since 1981**  
**Peter, Julie, Emily and Anthony Beauchamp**  
Call us on 06 327 7029 to discuss your needs and allow us to continue to  
serve and support our community with the guarantee of excellence and  
unbeatable value that has been our trademark for the last 30 years.  
We do not charge for travel within the Whanganui, Rangitikei or Manawatu areas  
**Beauchamp Funeral Home and Cobham Chapel**  
**18 Morris St, Marton**  
**P: 06 327 7029 e: admin@beauchamp.co.nz w: www.beauchamp.co.nz**

**Liz Rayner - Owner/Editor/Publisher**  
**Allan Pond - Advertising**  
  
Editorial & advertising produced  
by R & R Media Ltd  
for Rangitikei District Monitor,  
355 Wellington Rd, Marton

  
**Reaching Rangitikei Readers**  
**Phone | 06 327 7881 | monitoradvertising@extra.co.nz**  
**Enquiries Email | districtmonitor@extra.co.nz**  
**Website | www.districtmonitor.co.nz**  
Published weekly and delivered FREE to Marton, Bulls,  
Turakina, Hunterville, Ohakea Base, Mangaweka, Taihape

**ADVERTISING DEADLINES**  
DISPLAY ADVERTISEMENTS  
12 noon Tuesday  
CLASSIFIED ADVERTISEMENTS  
Noon Wednesday  
  
PH 06 327 7881 FAX 06 327 5162  
Box 79, 355 Wellington Rd, Marton

**PROUDLY PRINTED BY**  
  
**www.webstar.co.nz**





Sport continued from pg 8...

**HAWKESTONE GOLF CLUB**

Tuesday 28th. Kelly Footwear, Top Dog stableford: Dave Rohde 21, Dave Penfold 18, Grant Forbes & Matt Carroll 17, Gary Burgess, Brian Philps, Jan Van Loo & Greg James 16. Nearest pin: Greg James. 9 hole challenge: Dave beat Greg. Next week's challenger = Barry. Saturday 1st: FOMS - your partners in forestry, Queens Birthday multiplying stableford competition. No play due to weather conditions. Taimui challenge: next challengers 8/6/19 = Bondy & Dave R. Coming events; Tuesday golf; 9.30 am tee off. Saturday 8; club champs qualifying round 1; teeing off from 11 am. Sunday 9th; Transport Cup at Rangitikei: 11 am tee off and all members please attend. Visitors and casual golfers play 9, or 18 holes for only \$10. New members, please enquire to "hawkestonegolf@gmail.com" about our membership rates. All welcome. Other enquiries: contact Grant; 0210 572 931.

**ST FRANCIS INDOOR BOWLS**

We had another good night of bowls last week. We played two games of pairs and the team of Rose Plank and Erin Peddie was the only one to win both their games. Robbie Tait was the winner of the raffle. Next week will be another normal club night, so see you all there.

**POWER SPORTS COUPLE**

South African sports couple Nardus Erasmus and Nicole Walraven have come to live in Marton. Nicole is a South African hockey rep and trialled in the Olympic squad. She is currently playing for Central in NZ but for the time being is on the injured list, with a broken ankle. Nardus is rep rugby player from Bloemfontein in South Africa. He played in the Currie Cup for the Cheetahs. The Currie Cup tournament is South Africa's premier domestic rugby union competition. He is excited to have been recently called up for the NZ Turbos training squad. The couple will live in Marton until October, when they will return to South Africa to be married in January. Afterwards they will plan their future, which could include returning to settle in New Zealand.



Email your Sport and Club Reports  
to us by 10am Tuesday;  
monitoradvertising@xtra.co.nz  
Up to 200 words

# Give the world's healthiest sport a go

According to Forbes, squash is ranked the number-one healthiest sport after taking calorie burn, cardio endurance, muscular strength, muscular endurance, flexibility, and injury risk into consideration. Not only does it have lots of physical benefits, but it's social and it's fun. Marton has a fantastic three-court squash facility at 443 Wellington Road. With increased numbers and an active committee, the Rangitikei Squash Club is thriving. The club is hoping to see a resurgence in membership resembling the 1980s when numbers peaked at 420. Weekly Thursday night leagues are the mainstay of club competition. Open to all ages and abilities, it is a great opportunity for beginners to fall in love with the game and for more competitive players to get some practice in and stay fit over the cooler winter months. Leagues cost \$30.00 and run every Thursday for five weeks. Games start from 6.30pm. The bar is always open and food is available. If you're looking to have fun, keep fit and enjoy a friendly, social atmosphere, enquire about joining the next round of leagues beginning Thursday 13 June. Email rangsquash@gmail.com or text 027 422 3155.

## Have fun, keep fit Play Squash!

Join Rangitikei Squash Club's weekly leagues. Games run every Thursday for five weeks and cost just \$30.00.

All abilities welcome.

To join the next round of leagues beginning Thursday 13 June, email rangsquash@gmail.com or text 027 422 3155.



## Rangitikei District Monitor SUDOKU • HARD

6						8	4	
		3		6	1			7
			5					
9	6	7						
						1	5	2
				7				
4			9	8		5		
	2	1						6

May 30 Solution

9	6	4	5	7	3	8	2	1
8	3	7	2	6	1	9	4	5
5	1	2	9	8	4	3	6	7
7	4	6	8	5	9	2	1	3
3	8	9	1	2	7	4	5	6
2	5	1	3	4	6	7	9	8
4	2	3	6	1	8	5	7	9
6	9	5	7	3	2	1	8	4
1	7	8	4	9	5	6	3	2



Come down and catch yourself  
a bargain  
FOR THE CRICKET WORLD  
CUP



PINK BATTS  
R2.2 WALL  
(13.9 SQUARE METRES)

**\$84.00**  
BALE

PLY 12MM  
STRUCTURAL  
CD

ONLY  
**\$45.00**  
SHEET

90 x 45  
KILN DRIED H3.2  
SG8 CLEARS

**\$4.10**  
LM

(4.2 LENGTHS ONLY)

140 x 45  
KILN DRIED  
H3.2 SG8

**\$5.60**  
LM

(5.4 LENGTHS ONLY)

ALL PRICES INCL GST

**CENTRAL**

40 RACECOURSE AVE - MARTON - PH 06 327 5458  
Sales.marton@centralitm.co.nz



REMARKABLE

DECORATORS



*"Do it right first time"*

• GIB-STOPPING • PAINTING  
• MAINTENANCE  
FOR ALL YOUR GIB STOPPING  
AND PAINTING NEEDS

*"Whatever your hand finds to do,  
do it with your might!"*

**Carlos Paim - Director 021 313 139**  
**remarkablepp@outlook.com**  
**www.remarkable.org.nz**

REAL ESTATE



Licensed Real Estate Agent (REAA 2008)

**LOWER AGENCY FEES OF 3.5%+GST TO SELL YOUR HOME**

Phone 06 327 6690  
420 Wellington Rd, Marton

Email: [martonrealestate@gmail.com](mailto:martonrealestate@gmail.com)  
[Trademe.co.nz](http://Trademe.co.nz)

Phillip Mullins m: 027 203 2743 a/h: 06 327 6014



Call me - Phillip  
027 2032743 to be  
**SOLD SOLD SOLD**  
I'm a fully licensed  
agent (not just a  
salesperson) with 19  
years experience.  
Free Market Appraisal  
No Advertising Fees  
No Marketing Fees  
No Photography Fees  
and, of course, our  
Smart Commission Rate  
of 3.5% + GST



Marton **\$205,000**  
**RURAL VIEWS**  
Look for a top 1st home, and then this is an excellent contender. 3 bedrooms brick home. 60m<sup>2</sup> section with water pump. Combined kitchen and dining room. Bathroom with shower over bath, and separate toilet. Compact 688m<sup>2</sup> section with single garage. Located at the end of Ahuriri St. Marton with views to the neighbouring farm.

Property ID: M1368



Marton **\$199,000**  
**4 BED HOME UNDER \$200K**  
1st for the buyers and investors with an eye for a bargain. See to consider this 4 bedroom home with separate lounge and logfire heating. 2nd day room at rear of house. Openplan kitchen and dining room. Bathroom Compact 688m<sup>2</sup> section with single garage. Located at the end of Ahuriri St. Marton with views to the neighbouring farm.

Property ID: M1367



Marton **\$59,000**  
**SECTION WITH VIEW**  
This 17m<sup>2</sup> section with view to Mount Ruapehu will be appreciated and desired for even the most discerning home base. Located on the southern side of Wings Line it offers all day sun for your new home. Zoned Residential and not in flood zone. Don't say, as this is only a few vacant sections left in Marton.

Property ID: M1370



Marton **\$255,000**  
**LOOKS CAN BE DECEPTIVE**  
This property is like an unhone butterfly waiting to be appreciated and desired when it is made known. The bones are good and sound with plenty of space inside having 3 bedrooms, open plan kitchen and dining. Separate lounge with logfire. Large double garage and workshop space plus a room. A set on a large plot of land that backs onto a waterway. Stream.

Property ID: M1365



Marton **\$179,000**  
**ENTRY LEVEL HOME**  
Step up to a property ladder or add to your rental portfolio with this 1 bedroom 1960's weatherboard home. Single garage and 889m<sup>2</sup> fenced yard. Combined kitchen/dining room opens into the lounge with logfire heating. Bathroom with shower over bath. Room for the kids to play. A plank can't ready for you to add your own decorative touches and colours.

Property ID: M1362



81 Alexandra Street, Marton  
**A HOME FOR THE FAMILY**  
3 double bedroomed, weatherboard family home. Lounge, with French doors onto the front deck. Open plan kitchen/dining. Bathroom with shower & bath. Logfire, plus chippie on wetback in the kitchen. Ceiling & underfloor insulation. Fully fenced Kiwi ¼ acre section, with double garage & private backyard that has a fenced rear area, with woodshed, vegetable garden, or secure area for the dog

**\$267,000**

Property ID: M1371



10 Purnell Place, Marton  
**JUST MOVE IN & BE COSY FOR WINTER**  
Extremely neat, warm and tidy 1970's brick home with aluminium joinery. Decorated in modern colours with plush carpet. 3 bedrooms with wardrobes. Separate lounge that opens into the dining room and kitchen. Cosy logfire heating. Bathroom with shower, bath, and vanity. There is also a single garage, plus woodsheds and a covered verandah across the rear of the house. Fully fenced 650m<sup>2</sup> section. Realistically Priced to Sell at \$269,000.

**\$269,000**

Property ID: M1369



1 Oaklea Avenue, Marton  
**SECTION WITH VIEWS TO RUAPEHU**  
This solid 1960's home, set back from the road, creates privacy and is located in the sought-after area of Oaklea Ave, amongst other established homes. 3 bedrooms with wardrobes. Combined kitchen and dining. Separate lounge, with logfire and French doors to the front porch. Double garage and workshop, plus adjoining hobby room, or studio. The backyard is sun drenched, sheltered and private. Priced to Sell on Today's Market at \$335,000.

**\$335,000**

Property ID: M166



Marton **\$80,000**  
**RESIDENTIAL SECTION**  
Are you thinking of your retirement and need a section that is close to town to build your low maintenance dream home? Then this is the ideal site, being a 720m<sup>2</sup> flat corner section, making it an easy site to build on. Located approximately 200 metres from the centre of town, giving you easy access to shops, churches and medical centre. Services located in road frontage. Realistically priced at \$80,000.

Property ID: M1315